

MODEL: CVM120-A1H0T0V12S00
 PART NUMBER: N11364

REV 2018-09-27
 EN 1 (3)

HYDRAULIC VALVE:

Valve series:	CVM120 Series	Drive type:	2WD
Maximum total flow:	120 l/min	Flow limitation:	55 l/min per motor
Solenoid voltage:	12 V DC	Weight:	26,5 kg
Solenoid connector type:	Deutsch DT04-2P		

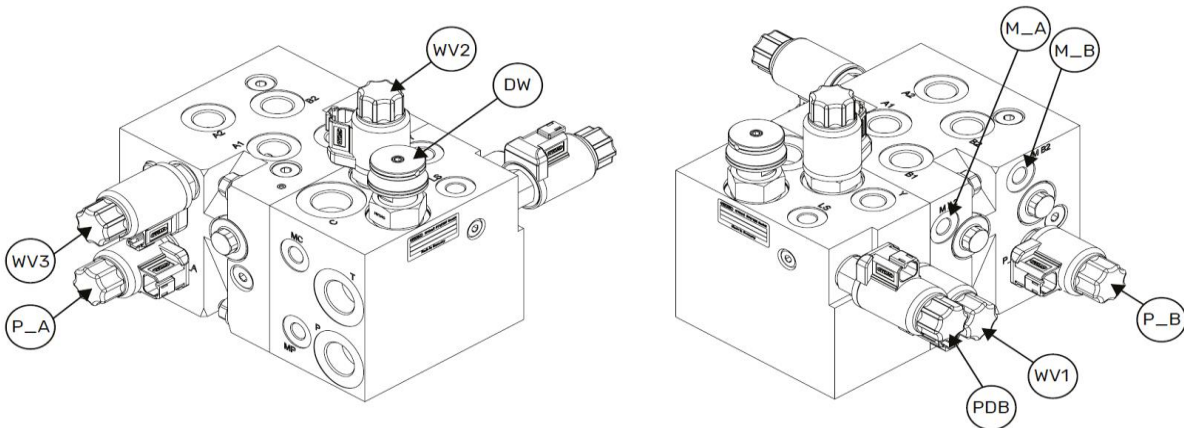
System compatibility:
Open circuit: Load-Sensing (LS)
Open circuit: Fixed flow (no LS-connection)

HYDRAULIC CONNECTIONS:

Port:	Function:	Type:	Size:
P	Working line, inlet	ISO 1179-1	G3/4"
LS	Load sense line	ISO 1179-1	G1/4"
T	Return line	ISO 1179-1	G3/4"
C	Case drain	ISO 1179-1	G3/4"
A1, B1	Working lines for motor 1	ISO 1179-1	G1/2"
A2, B2	Working lines for motor 2	ISO 1179-1	G1/2"
Y	Displacement control pilot	ISO 1179-1	G3/4"
MP	Measurement point for P	ISO 1179-1	G1/4"
MC	Measurement point for C	ISO 1179-1	G1/4"
M A2	Measurement point for A2	ISO 1179-1	G1/4"
M B2	Measurement point for B2	ISO 1179-1	G1/4"

SOLENOIDS:

Tag:	Resistance:	Power consumption:	Function:
P_A	8 Ohm	18 W	Directional control, forward
P_B	8 Ohm	18 W	Directional control, reverse
WV1	8 Ohm	18 W	Displacement control
WV2	8 Ohm	18 W	Drive / freewheeling mode selection
WV3	5,4 Ohm	27 W	Assisting traction control activation, forward
PDB	4,1 Ohm	350 - 1750 mA, proportional	Pressure control (tractive power)



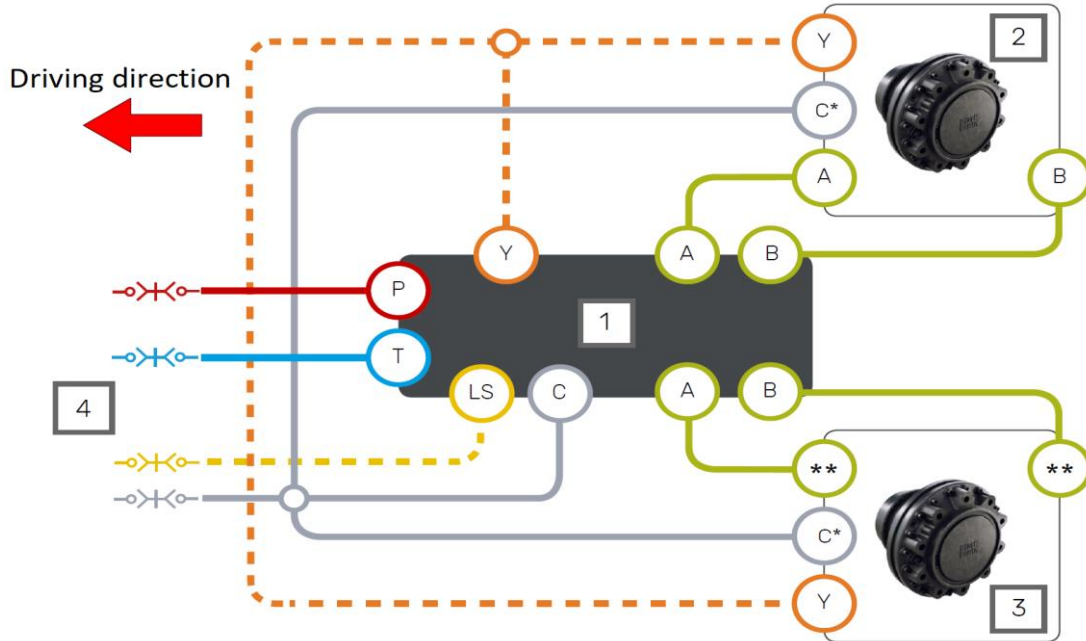
See 'Product Manual' for more information

Technical information contained in this publication is subject to change at any time without prior notice. For the latest information visit our website or contact Black Bruin or its representative.

MODEL: CVM120-A1H0T0V12S00
 PART NUMBER: N11364

REV 2018-09-27
 EN 2 (3)

HYDRAULIC SYSTEM CONNECTIONS:



- 1 Valve
- 2 Hydraulic motor (right side)
- 3 Hydraulic motor (left side)
- 4 Hydraulic lines to the tractor

* The marking of the drain line (C) is (C2) in motors with flushing line (C1).
 ** Verify the rotating direction of the left motor in the motor's datasheet.
 Connect motor lines according to **MOTOR CONNECTIONS** table (below).

MOTOR CONNECTIONS:

Vehicle side:	Motor type:	Motor to valve connections:	
Right	1-speed	A to A	B to B
	2-speed, CW preferred	A to A	B to B
Left	1-speed	A to B	B to A
	2-speed, CCW preferred	A to A	B to B

SYSTEM MODE SELECTION VALVE:

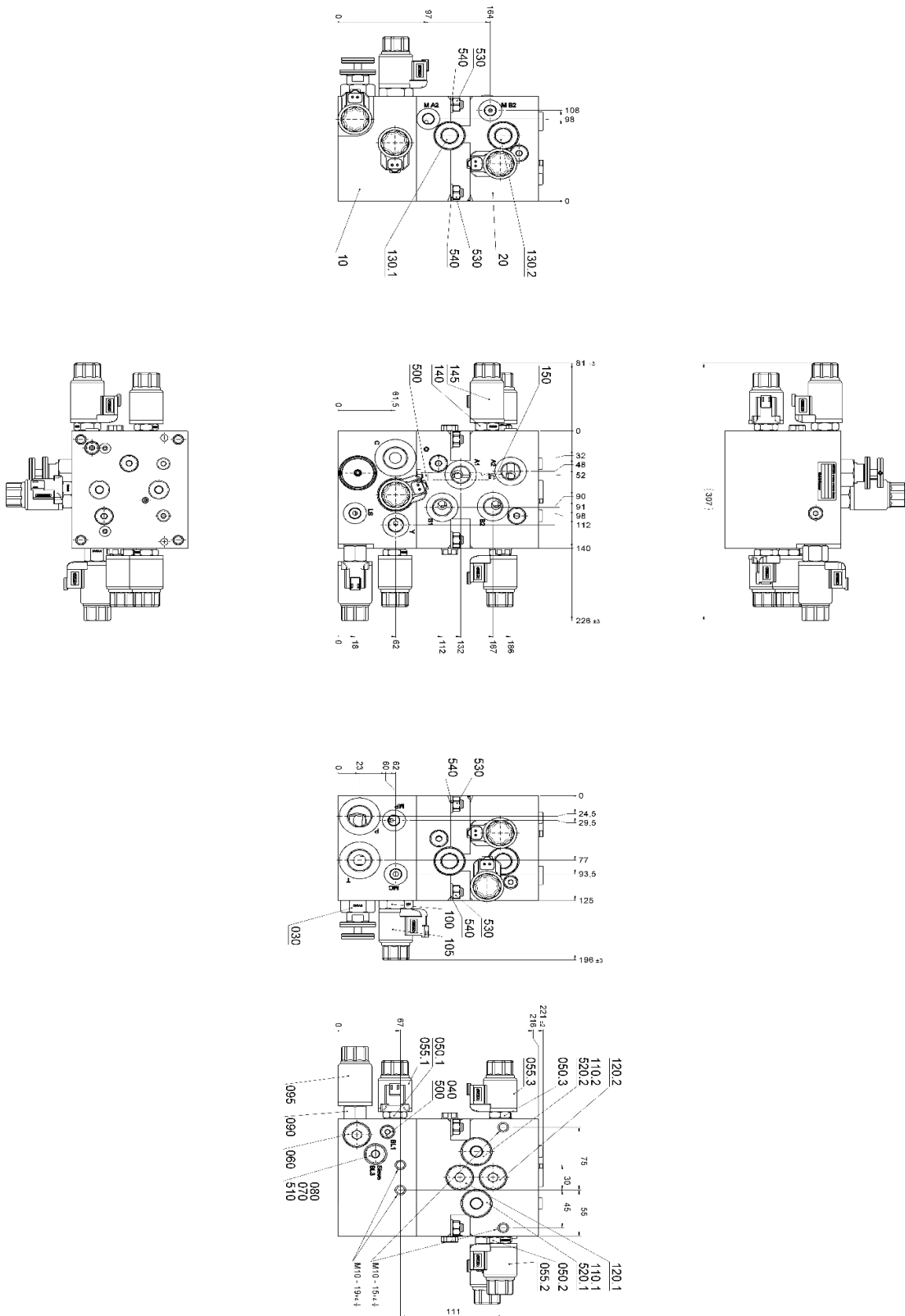
Tag:	Pos:	Position:	Operation mode:	Use:
DW	30	Fully open (CCW)	Oil circulation enabled	Fixed displacement system (non-LS)
		Fully closed (CW)	Oil circulation disabled	Load Sensing system (Power Beyond)

See 'Product Manual' for more information

MODEL: CVM120-A1H0T0V12S00
 PART NUMBER: N11364

REV 2018-09-27
 EN 3 (3)

DIMENSIONS:



Technical information contained in this publication is subject to change at any time without prior notice. For the latest information visit our website or contact Black Bruin or its representative.

See 'Product Manual' for more information